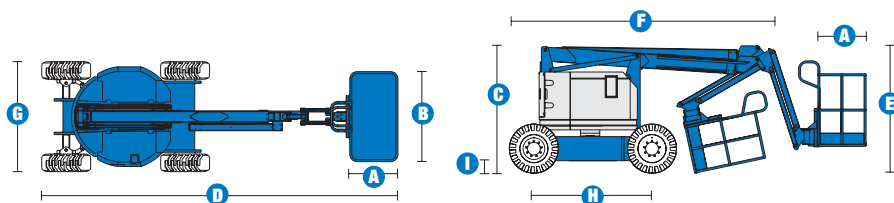
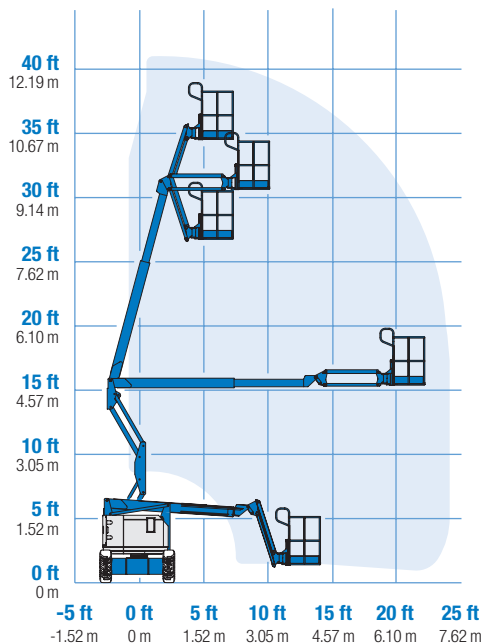


# Specifications



## RANGE OF MOTION Z™-34/22 IC



MODELS	Z™-34/22 IC 2WD		Z™-34/22 IC 4WD	
	Metric	US	Metric	US
Working height maximum*	12.52 m	40 ft 6 in	12.62 m	40 ft 10 in
Platform height maximum	10.52 m	34 ft 6 in	10.62 m	34 ft 10 in
Horizontal reach maximum	6.78 m	22 ft 3 in	6.78 m	22 ft 3 in
Up and over clearance - at platform	4.57 m	15 ft	4.60 m	15 ft 1 in
at jib	4.55 m	14 ft 11 in	4.57 m	15 ft
<b>A</b> Platform length	76 cm	2 ft 6 in	76 cm	2 ft 6 in
<b>B</b> Platform width	1.42 m	4 ft 8 in	1.42 m	4 ft 8 in
<b>C</b> Height - stowed	2 m	6 ft 7 in	2.06 m	6 ft 9 in
<b>D</b> Length - stowed	5.64 m	18 ft 6 in	5.66 m	18 ft 7 in
<b>E</b> Storage height	2.26 m	7 ft 5 in	2.26 m	7 ft 6 in
<b>F</b> Storage length	4.11 m	13 ft 5 in	4.11 m	13 ft 6 in
<b>G</b> Width	1.73 m	5 ft 8 in	1.85 m	6 ft 1 in
<b>H</b> Wheelbase	1.88 m	6 ft 2 in	1.88 m	6 ft 2 in
<b>I</b> Ground clearance - centre	15 cm	6 in	17 cm	6.5 in

## PRODUCTIVITY

Lift capacity	227 kg	500 lbs	227 kg	500 lbs
Platform rotation	180°	180°	180°	180°
Vertical jib rotation	139°	139°	139°	139°
Turntable rotation	355° non-continuous		355° non-continuous	
Turntable tailswing	zero	zero	zero	zero
Drive speed - stowed	4.8 km/h	3.0 mph	4.8 km/h	3.0 mph
Drive speed - raised **	1.1 km/h	0.68 mph	1.1 km/h	0.68 mph
Gradeability***	37%	37%	45%	45%
Turning radius - inside	1.75 m	5 ft 9 in	1.80 m	5 ft 11 in
Turning radius - outside	3.98 m	13 ft 1 in	4.11 m	13 ft 6 in
Controls	12 V DC proportional		12 V DC proportional	
Tyres	23 x 37 cm	9 x 14.5 in	25 x 42 cm	10 x 16.5 in
	foam filled		rough terrain air filled	

## POWER

Power source	Kubota D-905 3-cylinder diesel 23.5 hp (17.5 kW) Kubota DF-752 3-cylinder petrol/LPG 24.5 hp (18.3 kW)			
Auxiliary power unit	12 V DC	12 V DC	12 V DC	12 V DC
Hydraulic tank capacity	71.9 L	19 gal	71.9 L	19 gal
Fuel tank capacity	34.1 L	9 gal	34.1 L	9 gal

## WEIGHT\*\*\*\*

	4,604 kg	10,150 lbs	4,740 kg	10,450 lbs
--	----------	------------	----------	------------

## STANDARDS COMPLIANCE

CE EN280, PB-10-611-03

\* The metric equivalent of working height adds 2 m to platform height. U.S. adds 6 ft to platform height.

\*\* In lift mode (platform raised), the machine is designed to operate on firm, level surfaces only.

\*\*\* Gradeability applies to driving on slopes. See operator's manual for details regarding slope ratings.

\*\*\*\* Weight will vary depending on options and/or country standards.

## Features

### EASILY CONFIGURED TO MEET YOUR NEEDS

#### PLATFORM

- Steel 1.42 m (4 ft 8 in) (standard)
- 1.22 m (4 ft) jib boom

#### JIB

- 1.22 m (4 ft) jib boom

#### POWER OPTIONS

- Kubota diesel 23.5 hp (17.5 kW)
- Kubota petrol/LPG 24.5 hp (18.3 kW)

#### DRIVE OPTIONS

- 2 x 4
- 4 x 4

#### TYRE OPTIONS

- Rough terrain air-filled (standard 4WD)
- Industrial foam-filled (standard on 2WD)
- Industrial non-marking foam-filled
- Rough terrain foam-filled

### STANDARD FEATURES

#### MEASUREMENTS

##### Z™-34/22 IC 2WD

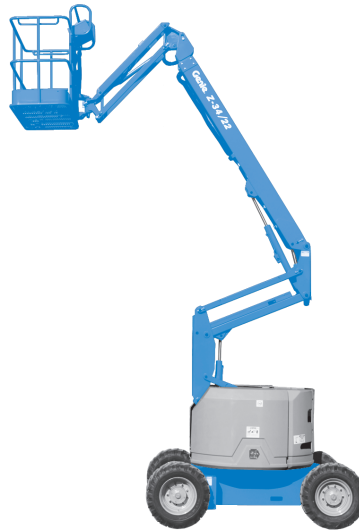
- 12.52 m (40 ft 6 in) working height
- 6.78 m (22 ft 3 in) horizontal reach
- 4.54 m (14 ft 11 in) up-and-over clearance
- Up to 227 kg (500 lb) lift capacity

##### Z™-34/22 IC 4WD

- 12.62 m (40 ft 10 in) working height
- 6.78 m (22 ft 3 in) horizontal reach
- 4.57 m (15 ft) up-and-over clearance
- Up to 227 kg (500 lb) lift capacity

#### PRODUCTIVITY

- 1.22 m (4 ft) jib with 139° working range
- Self-levelling platform
- Hydraulic platform rotation
- Fully proportional controls
- Drive enable
- AC power cord to platform
- Horn
- Hour meter
- Tilt alarm
- 355° non-continuous turntable rotation
- Lockable turntable covers
- Zero tailswing and front arm swing
- Two speed wheel motors
- Certified load sensor



### STANDARD FEATURES cont.

#### POWER

- All engines are emissions compliant
- 12 V DC auxiliary power
- Engine protection package

### OPTIONS & ACCESSORIES

#### PRODUCTIVITY

- Platform swing gate
- Half mesh platform inserts with swing gate
- Air line to platform
- Arctic hydraulic oil
- Basic hostile environment kit
- Standard aircraft protection package
- Deluxe aircraft protection package
- Tool tray
- Fluorescent tube caddy
- Pipe cradle (pair)
- Alarm package
- Platform work lights
- Lockable platform control box covers

#### POWER

- Engine gauge package
- AC generator packages 2000 watt generator (110 V, 230 V/50 Hz)
- Cold start packages

### European Offices

#### UK

The Maltings  
Wharf Road  
Grantham NG31 6BH  
UK  
Tel: +44 (0)1476 584333  
Fax: +44 (0)1476 584334

#### France

10, ZA de la Croix St. Mathieu  
28320 Gallardon  
France  
Tel: +33 (0)2 37 26 09 99  
Fax: +33 (0)2 37 26 09 98

#### Germany

Finienweg 3  
28832 Achim/Bremen  
Germany  
Tel: +49 (0)4202 8852-0  
Fax: +49 (0)4202 8852-25

#### Spain

Gaià 31, Pol. Ind. Plá d'en Coll  
08110 Montcada i Reixac  
Barcelona  
Spain  
Tel: +34 93 572 50 90  
Fax: +34 93 572 50 91

#### Scandinavia

Tagenevägen 72  
425 37 Hisings Kärra  
Sweden  
Tel: +46 31 57 51 00  
Fax: +46 31 57 90 20

### Genie United States

18340 NE 76th Street  
P.O. Box 97030  
Redmond, Washington 98073-9730  
USA  
Tel: +1 425 881-1800  
Fax: +1 425 883-3475

**WEB:** [www.genieindustries.com](http://www.genieindustries.com)  
**Email:** [infoeurope@genieind.com](mailto:infoeurope@genieind.com)

### Distributed By: